



深圳市沃克网络产品有限公司  
Shenzhen Wolck Network Product Co.,Ltd

# EYDFA with WDM

VTA-EYXXXXD



**Shenzhen Wolck Network Products Co.,Ltd.**  
Address: 1F/9#,BANTIAN ZHONG BAO LONG BI INDUSTRY  
AREA ,SHENZHEN , CHINA(518129)

**Tel:** +86-755-21031814  
**Email:** wolckdata@gmail.com  
**Website:** <http://cn.wolckpon.com/>



Alibaba

## I . Features

- (1) Output adjustable by buttons in the front panel or web manage, the range is 0~5dBm.
- (2) Maintenance function of one-time downward attenuation of 6dBm by buttons in the front panel, to facilitate the optical fiber hot-plug operation without turn off The device.
- (3) Multi-ports output, can built in 1550 WDM.
- (4) RJ45 port enables remote monitoring and management of devices on WEB pages and USB port facilitates device upgrade
- (5) The laser turn on/off by locks keys in the front panel.
- (6) Adopts JDSU or Oclaro Pump laser.
- (7) Led displays the working condition of the machine.
- (8) Dual power hot-plug power supply for choice, 110V,220V AC, DC power supported.

## II . Installation

### Before installation

1. Please check if there is damage in outside of the machine.
2. Please check the spare parts is complete or not, if not complete, please contact us.

### Installation

1. When multiple devices are installed, at least about 1.75 inches(about4.5cm) of space should be reserved between the devices,to facilitate ventilation and heat dissipation Of equipment.
2. Please check the power supply socket and the grounding of the power supply, the grounding Impedance should  $\leq 4\Omega$ , 220V power supply should be with three cables and the grounding cable should be in the middle, Unfitted grounding will damage the device or influence the signal quality.
3. Please make sure the power supply switch to off in the rear panel.
4. Please confirm the fiber port is clean before connection the fiber.





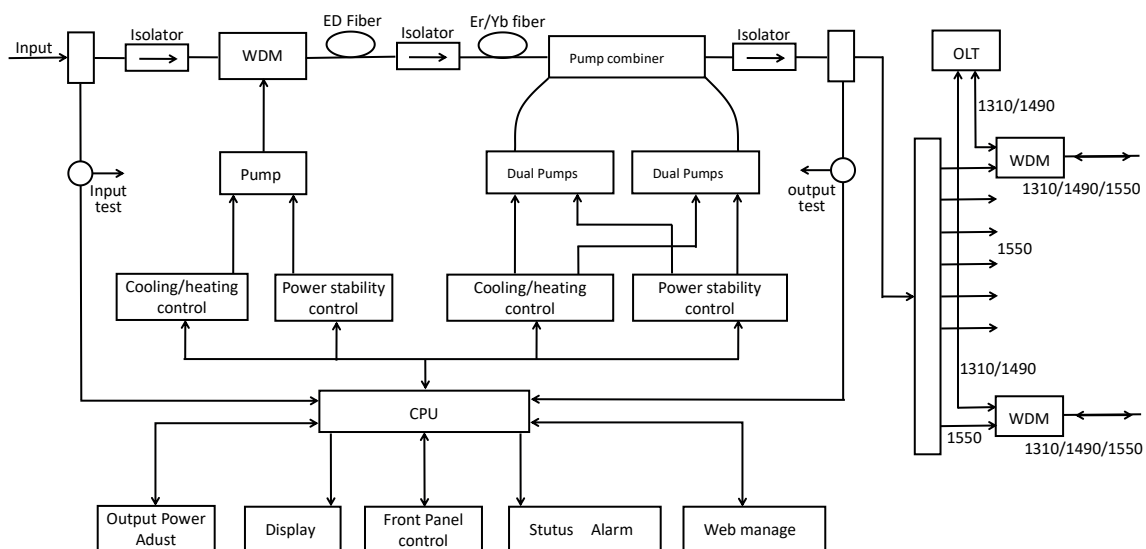
深圳市沃克网络产品有限公司  
Shenzhen Wolck Network Product Co.,Ltd

### III. Set and Operation

#### MAIN Parameters

Items	Parameter									
	3	32	33	34	35	36	37	38	39	40
Output (dBm)	3	32	33	34	35	36	37	38	39	40
Output (mW)	12	1600	2000	2500	3200	4000	5000	6400	8000	10000
Input (dBm)	-8 ~ +10									
Input 1550nm fiber	1 or 2									
RF testing (optional)	1550nm TV signal testing									
Output ports	4/8/16/32/64/128									
Range or output adjustment (dBm)	5									
Management	SNMP									
Wavelength (nm)	1310~1550									
Output stability (dB)	<±0.3									
Optical return loss (dB)	≥45									
Fiber connector	FC/APC, SC/APC, SC/IUPC, LC/APC, LC/UPC									
Noise figure (dB)	<6.0 (input 0dBm)									
Connector type	RJ45, USB									
Power consumption (W)	≤80									
Voltage (V)	110VAC, 220VAC, DC 48V(64/128ports)									
Working temp (°C)	0 ~ 55									
Size (mm)	2U:425(L)x482(W)x88(H)					3U: 425(L)x482(W)x176(H)				
NW (Kg)	8.8~13kgs									

#### Diagram



**Shenzhen Wolck Network Products Co.,Ltd.**  
Address: 1F/9#, BANTIAN ZHONG BAO LONG BI INDUSTRY AREA, SHENZHEN, CHINA(518129)

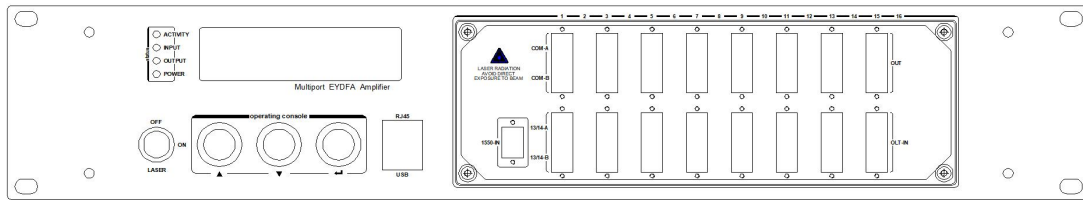
Tel: +86-755-21031814  
Email: wolckdata@gmail.com  
Website: http://cn.wolckpon.com/





深圳市沃克网络产品有限公司  
Shenzhen Wolck Network Product Co.,Ltd

Front Panel



8 Ports , 16Ports , 32Ports or with WDM

3.3.1: LED display

Displays the working parameter of the machine.

3.3.2: ACTIVITY Indication light

Green: Normal Condition.

Red: No input or abnormal condition.

3.3.3: INPUT Indication light

Green: Normal.

3.3.4: OUTPUT Indication light.

Green: Normal.

3.3.5: POWER Indication light.

Green: Power Connected .

3.3.6: Key

ON:Turn on the laser.

OFF:Turn off the laser .

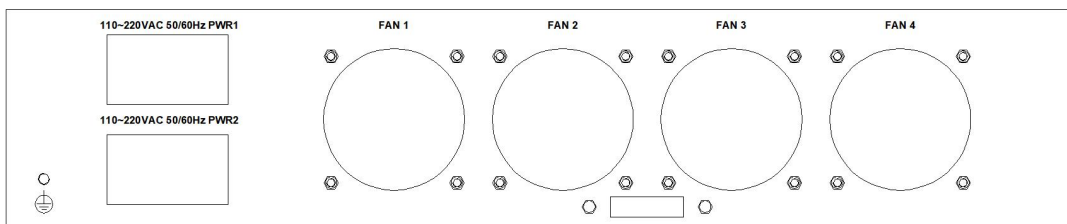
3.3.7: RJ45

For remote monitoring and management .

3.3.8: USB

Upgrade equipment or serial communication.

Rear Panel



3.4.1: Power Switch

ON:Turn on the power

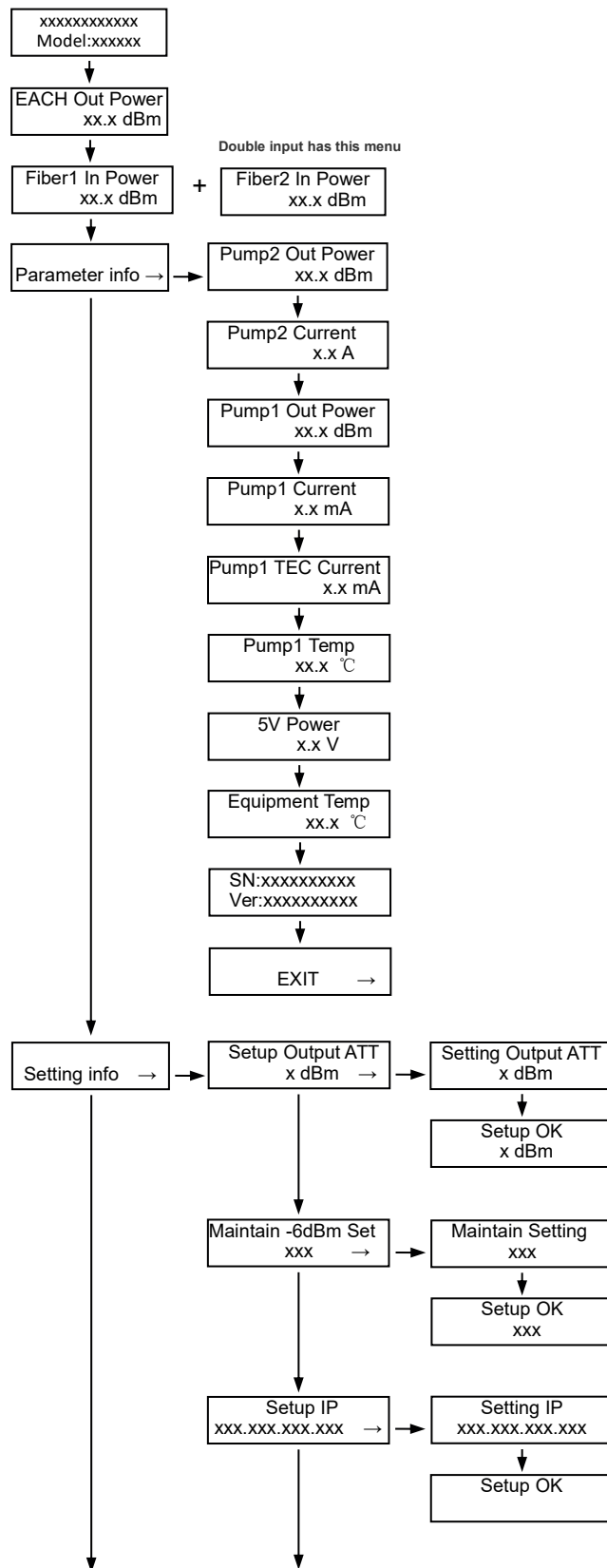
OFF:Turn off the power

3.4.2: Power Socket

110VAC or 220VAC

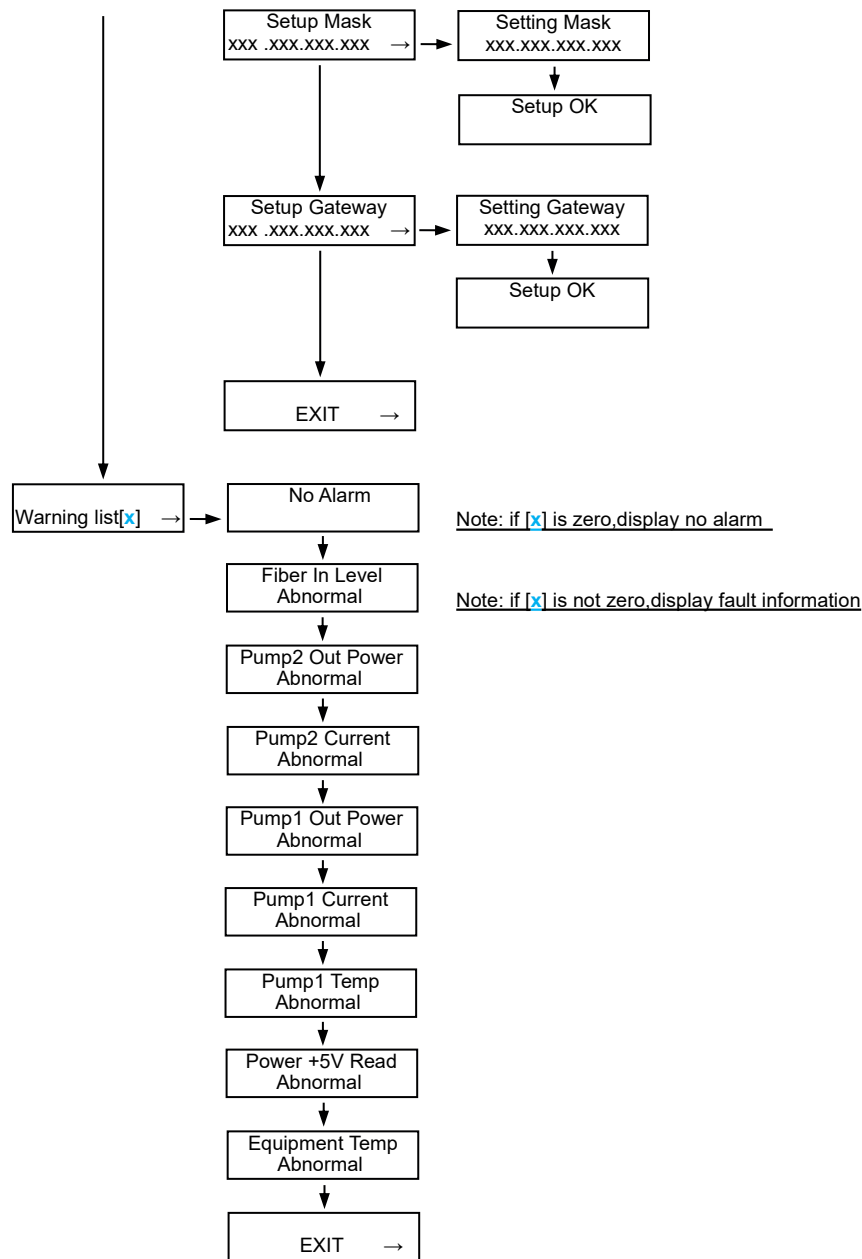


Menu operation flow chart





深圳市沃克网络产品有限公司  
Shenzhen Wolck Network Product Co.,Ltd





深圳市沃克网络产品有限公司  
Shenzhen Wolck Network Product Co.,Ltd

#### IV. warranty term

The product that my company produces, from the day that the user receives goods,go up in material and manufacturing craft press warranty agreement to guarantee, repair free of charge in guarantee period.

**Note:** we are not responsible for any damage caused by improper packing of returned products

The following situation is not covered by the warranty:

1. During the warranty period, the user shall not unseal, repair or change any part of the equipment, or the company shall not be responsible for the consequences caused thereby.
2. During the warranty period, faults caused by improper use of storage assembly or accidents by users are not covered by the warranty.
3. If the warranty period is exceeded, our company will provide free repairs for life, but the user will have to pay the material fee.

